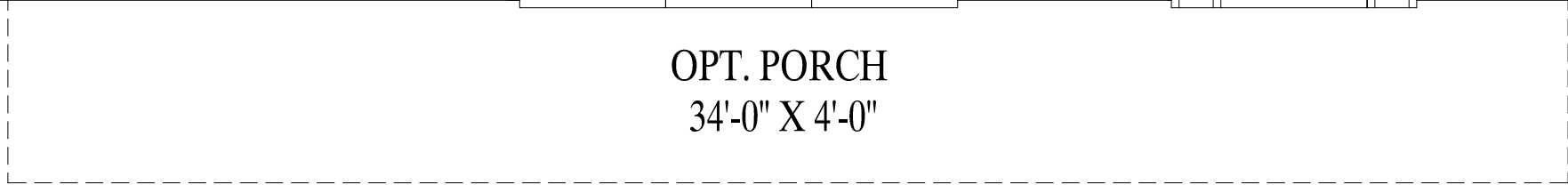
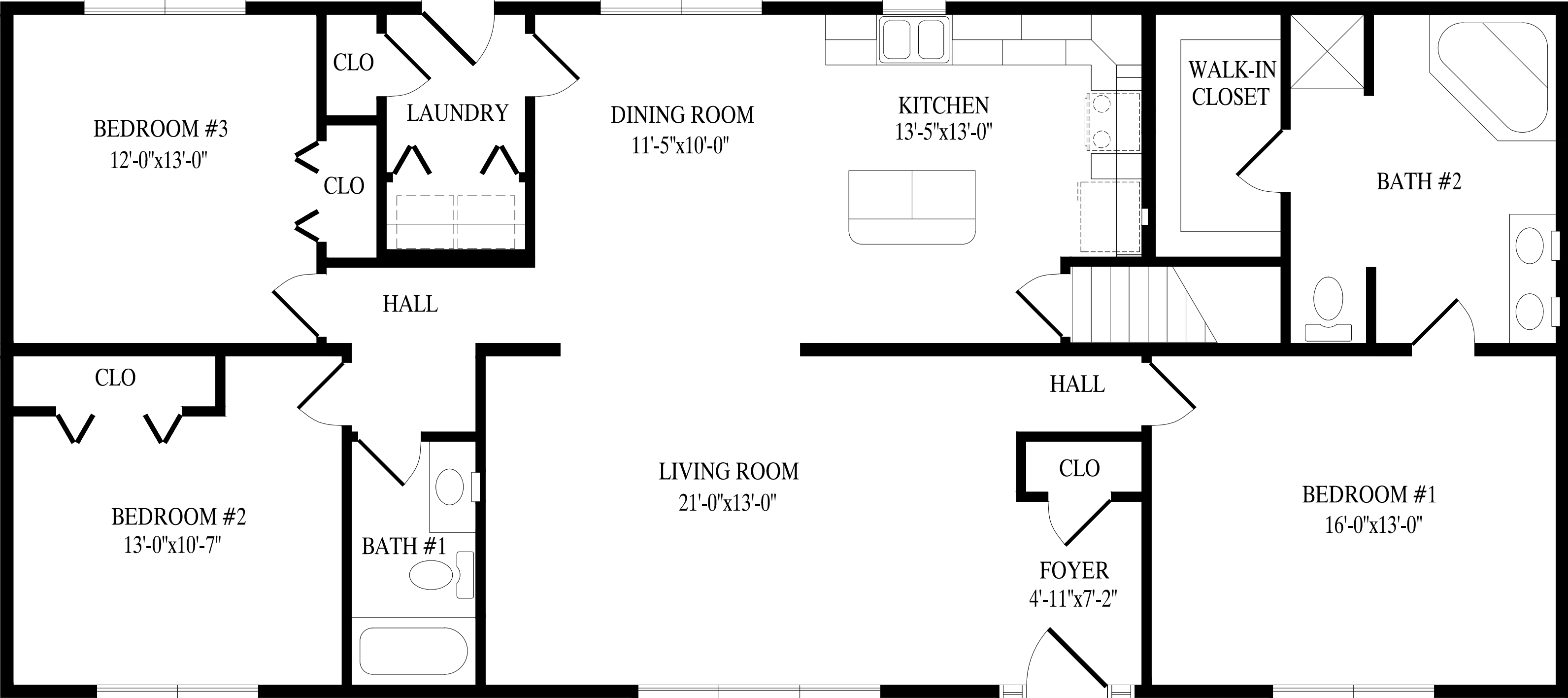




**PROFESSIONAL
BUILDING
SYSTEMS, INC.**



Pine Run
27' 6" X 62' Ranch
1705 Total Sq. Ft.

BEDROOM #3
12'-0"x13'-0"

CLO

LAUNDRY

DINING ROOM
11'-5"x10'-0"

KITCHEN
13'-5"x13'-0"

WALK-IN
CLOSET

BATH #2

HALL

HALL

CLO

LIVING ROOM
21'-0"x13'-0"

CLO

BEDROOM #1
16'-0"x13'-0"

BEDROOM #2
13'-0"x10'-7"

BATH #1

FOYER
4'-11"x7'-2"

OPT. PORCH
34'-0" X 4'-0"