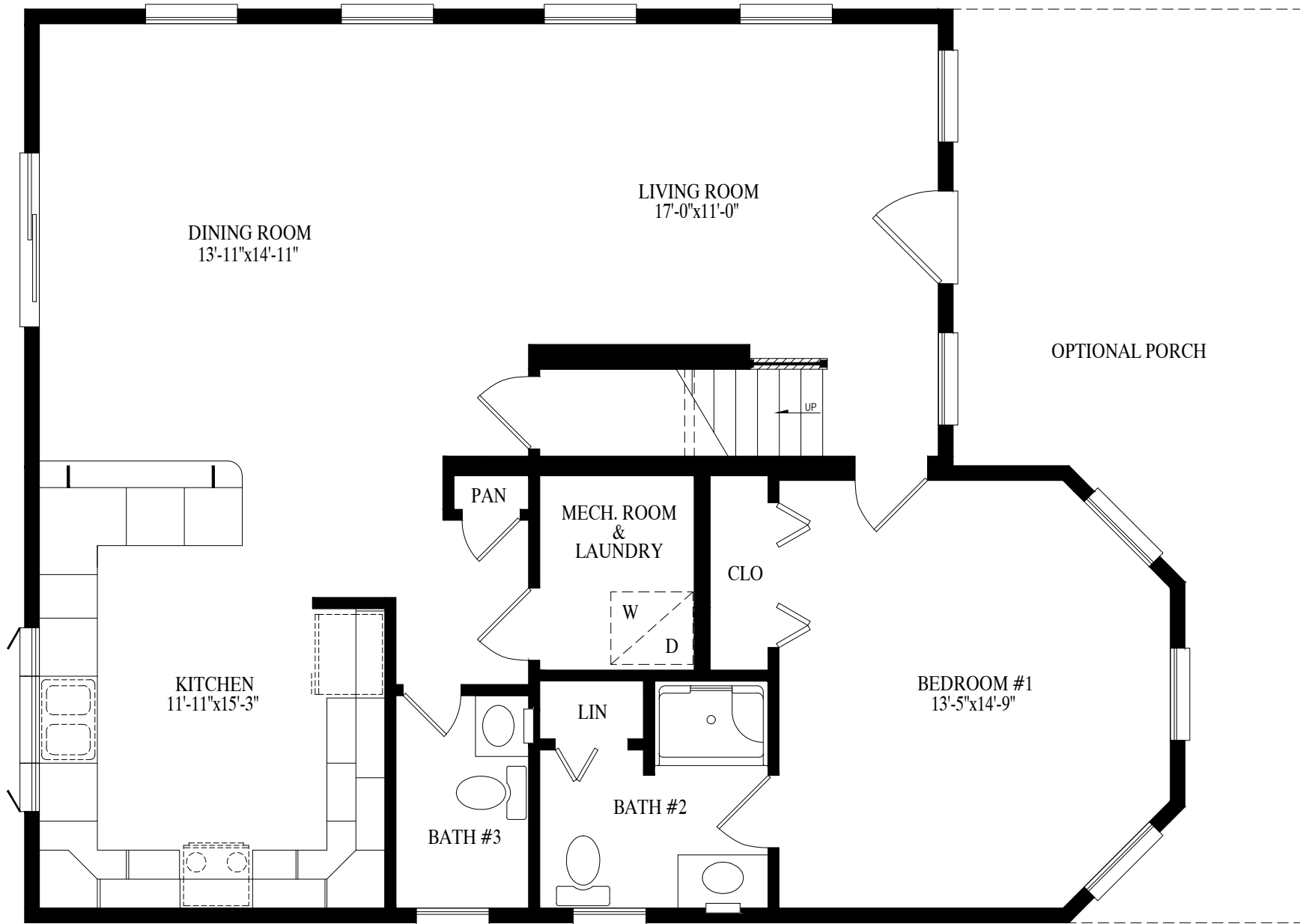
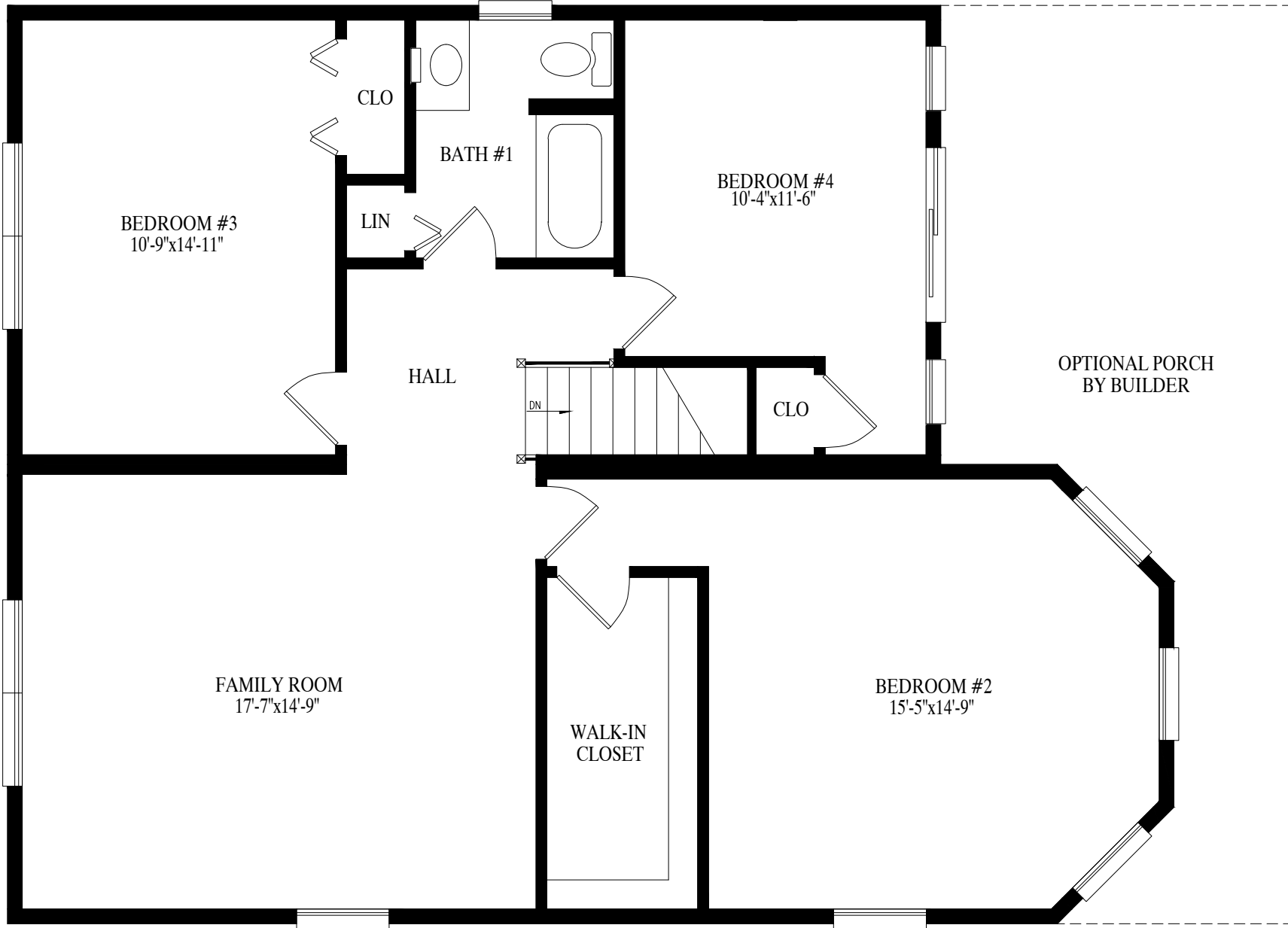




**PROFESSIONAL
BUILDING
SYSTEMS, INC.**



1118 SQ. FT. LIVING AREA 1ST FL.
1118 SQ. FT. LIVING AREA 2ND FL.
2236 SQ. FT. TOTAL LIVING AREA



BEDROOM #3
10'-9"x14'-11"

BEDROOM #4
10'-4"x11'-6"

OPTIONAL PORCH
BY BUILDER

FAMILY ROOM
17'-7"x14'-9"

BEDROOM #2
15'-5"x14'-9"

CLO

BATH #1

LIN

HALL

DN

CLO

WALK-IN
CLOSET